



AutoPoint - MARS

Multi Axis Robotic probing system for reverse engineering and testing of circuit card assemblies

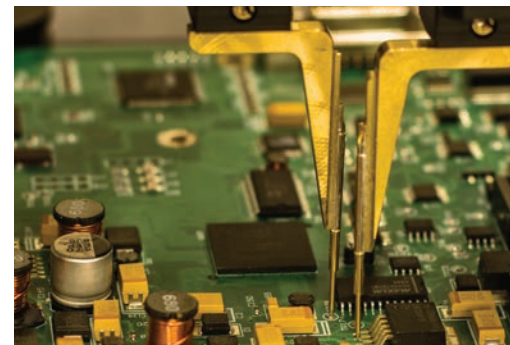
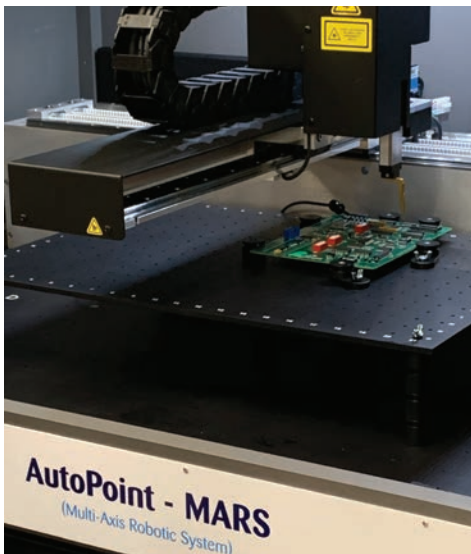
The AutoPoint MARS combines the power of PinPoint technology, TestVue software and Robotic probing to meet today's demanding circuit card test requirements, yesterday's obsolescence issues and tomorrow's life cycle sustainment needs all from one integrated system.

Features

- Generate circuit card data for schematic generation.
- Create schematics for undocumented boards.
- Generate BoMs, Net Lists, X,Y Coordinates.
- Use data to build test routines for existing CCAs or new manufactured cards.
- Create bare board test routines.
- Create populated board test routines.
- Power OFF – Opens, Shorts, Signature Analysis, Resistance, Inductance and Capacitance.
- Power ON – Voltage, Frequency, Pulse, Waveforms, Stimulus – Response.
- Optional:
 - Full PinPoint Integration
 - Automated Guided Probe
 - Boundary Scan
 - 3rd Party Instrumentation

KEY BENEFITS

- Circuit Interrogation Analysis.
- Advance Circuit Diagnostics
- Automated Schematic Generation.
- Automated Testing and Troubleshooting.
- Fixtureless Test - Testing with rapid program development.
- Integration of multiple test techniques and equipment.



Circuit Interrogation Analysis

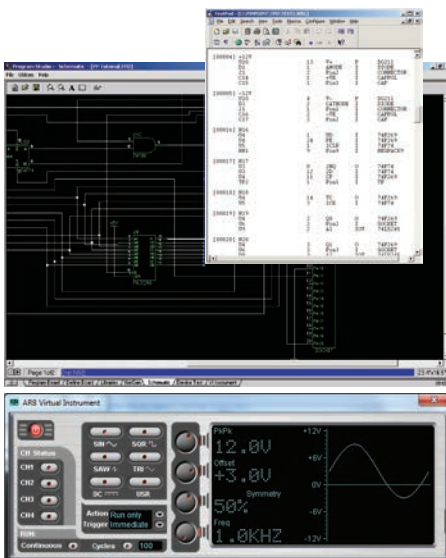
The AutoPoint - MARS employs a unique technique referred to as Circuit Interrogation Analysis (CIA) which drastically reduces the amount of probing iterations required to learn the interconnectivity. The data collected during this process can also be used as part of the diagnostic and test strategy if required.

Advanced Circuit Diagnostics

Multiple test techniques can be applied to inspect and test the Circuit Card Assy for faults such as: Opens, Shorts, incorrect values, defective components, voltage levels, frequencies, Signal variations and more.

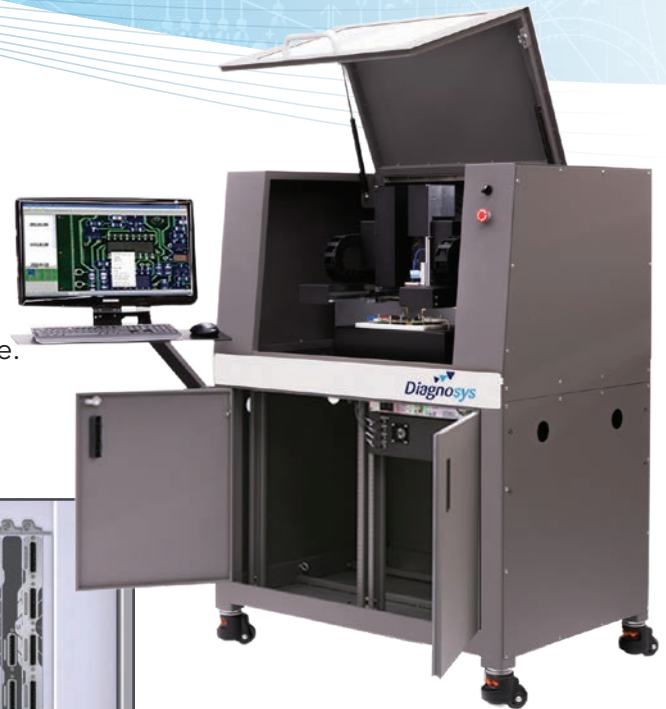
Integrated PinPoint Test

Full integration with a PinPoint system allows all the features of a PinPoint to be accessed while using the prober. Power and I/O signals are routed to the edge connector while the moving probes can be employed as both guard points and or a guided probe.



PinPoint

PinPoint provides – UUT Power Analog instruments, Signature Analysis, Functional Edge Test, Boundary scan and more. It mounts in 19" rails, conveniently located in the system cabinet.



Automated Schematic Generation

A key advantage in maintaining and sustaining electronic assemblies is to have electrical Schematics that show the connectivity and configuration of the circuit card. Astronics has combined its Schematic Generation software with a multi-head flying probe system that automates the process and makes schematic generation possible for either through hole or Surface mount technology.

Get Started Today

For additional details, please contact Astronics Test Systems.

12889 Ingenuity Dr.,
Orlando, FL 32826 USA
+1.407.381.6062
ATSales@astronics.com



AstronicsTestSystems.com

TECHNICAL SPECS

- **Number of test heads:** 2
- **Max board under test size:** 27" x 23" (68.6 cm x 58 cm)
- **Max probing area:** 19" x 12" (48.3 cm x 30.5 cm)
- **Max board component height:** 4.8" (12.2 cm)
- **Dimensions:** 47" W x 61.5" H x 35.75" D (119.4 cm W x 156.2 cm H x 90.8 cm D)
- **Cabinet internal dimensions:** 4.5" W x 29" H x 33" D (114.3 cm W x 73.6 cm H x 83.8 cm D)
- **Accuracy and resolution:** 0.0003937" (+/- 10 microns) for Top Slot (6" above plate) at 0.00002" (0.4 microns)